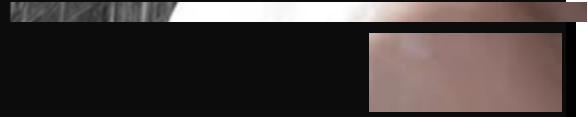


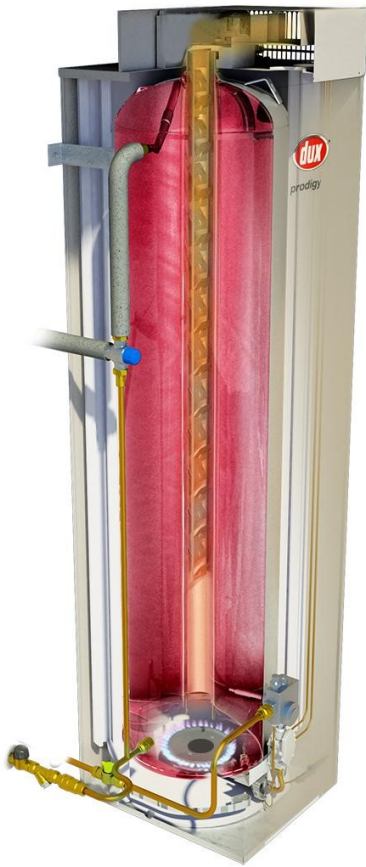


◀ Since 1915 ▶

New Prodigy 4 & 5 range



4 star Dux gas storage water heater



- Market leading 4 star in both
 - Hot water recovery and first hour capacity
- Now matches the first hour capacity of the old 3 star models
- Identical footprint with existing 3 star gas storage unit, ensuring easy replacement
- Star rating
 - 135L – 4.5 stars
 - 170L – 4.2 stars
- Foam in-place design for
 - Greater heat retention
 - Robust strong case
- Available in Natural gas and Propane and both 135 and 170 litre models
- Simple gas operated control
- LHS connections
- 7 Year tank warranty

New Burner technology now provides more hot water

◀ Since 1915 ▶



Replace a 3 star with a Dux 4 star and not disappoint

	Dux 135 3 star	Dux 135 4 star	Rheem 135 4 star	Dux 170 3 star	Dux 170 4 star	Rheem 170 4 star
Storage Capacity (L)	135	135	135	170	170	170
Nominal Recovery (L)	135	130	117	135	146	117
First Hour Capacity (L)	270	265	252	305	316	287
Star rating	3.0	4.5	4.0	3.0	4.2	4.1

It is really important to match both the storage capacity and first hour capacity to ensure the customer is not disappointed with their replacement water heater's performance. – **Only the Dux 4 star comes close**

New Burner technology now provides more hot water

◀ Since 1915 ▶



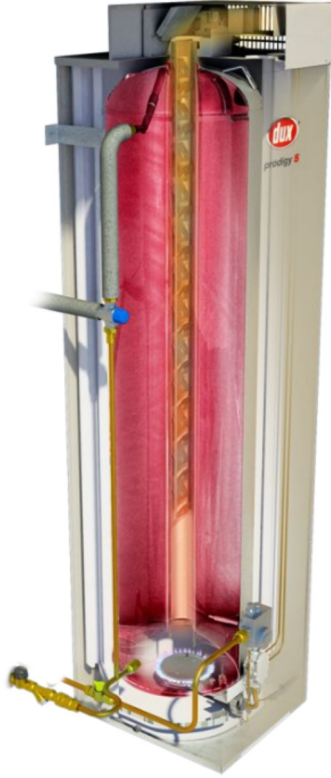
Key changes to the 4 star range

- Prodigy 4 now market leading in both recovery rate and first hour capacity
- Recovery rate increased by 25 %
 - 135 litre – now **130L/hr** was 104L/hr
 - 170 litre – now **146L/hr** was 117L/hr
- New burner technology provides
 - Higher input capability
 - Lighter weight
- Strengthened terminal top
 - Removal of angled front to double the crush strength
- Removed polystyrene from the insulation
 - Internal metal casing replacing the polystyrene
 - Strengthening the construction
- LHS inlet and outlet connections



New Burner technology now provides more hot water

5 star Dux gas storage water heater



- Patented flue damper reducing heat loss
- Dual Handed connections
- Now matches the first hour capacity of the old 3 star models
- Identical footprint with existing 3 star gas storage unit, ensuring easy replacement
- Star rating
 - 135L – 5.3 stars
 - 170L – 5.2 stars
- Foam in-place design for
 - Greater heat retention
 - Robust strong case
- Simple gas operated control
- Available in Natural gas and Propane
- 10 Year tank warranty

New Burner technology now provides more hot water

◀ Since 1915 ▶



Key changes to the 5 star range

- Recovery rate increased by 25 %
 - 135 litre – now **130L/hr** was 104L/hr
 - 170 litre – now **146L/hr** was 117L/hr
- New burner technology provides
 - Higher input capability
 - Lighter weight
- Strengthened terminal top
 - Removal of angled front to double the crush strength
- Removed polystyrene from the insulation
 - Internal metal casing replacing the polystyrene
 - Strengthening the construction
- Dual handed – 4 star is LHS connections only



New Burner technology now provides more hot water

Upgraded Gas 5 Star comparison

	135 Litre				170 Litre			
	Rheem (350265)	Rheem Stellar (850330)	Aquamax G270SS	Dux 135	Rheem (350305)	Rheem Stellar (850360)	Aquamax G340SS	Dux 170
Footprint (Width x Depth)	485 x 556	485 x 558	480 x 560	420 x 500	485 x 556	485 x 558	520 x 610	420 x 500
Gas Consumption (MJ)	30	42	33	29.5	30	42	40	33
Storage Capacity (L)	130	130	130	135	160	160	155	170
Nominal Recovery (L)	145	200	145	130	145	200	185	146
First Hour Capacity (L)	275	330	275	265	305	360	340	316
Inlet/Outlet	LHS	LHS	LHS	Dual	LHS	LHS	LHS	Dual

Only Dux has a footprint which can replace any old 3 star models

Only Dux 5 star are Dual handed

Dux first hour capacity matches the old 3 star models

New Burner technology now provides more hot water

◀ Since 1915 ▶



Model Numbers for the new range

	Natural Gas	Propane (LPG)
Prodigy 4 star		
135L	135ZB4N	135ZB4P
170L	170ZB4N	170ZB4P
Prodigy 5 Star		
135L	135DB5N	135DB5P
170L	170DB5N	170DB5P

H□□ □□ □□□□ □□□ □ □□□□□□ □□□□

Ex. **135** **ZB** **4** **N**

↓ ↓ ↓ ↓

Capacity (L)	Series Range	Star Rating	Gas Type
135	ZB = 4 star	4 = 4 star	N = Natural Gas
170	DB = 5 star	5 = 5 star	P = Propane

◀ Since 1915 ▶

